

Model Comparison

Model	VRRMVDRM(V)	ITAVIFAV(A)
CTT600GK12	1200	503
CTT600GK14	1400	503
CTT600GK16	1600	503
CTT600GK18	1800	503
CTT600GK20	2000	503
CTT600GK22	2200	503

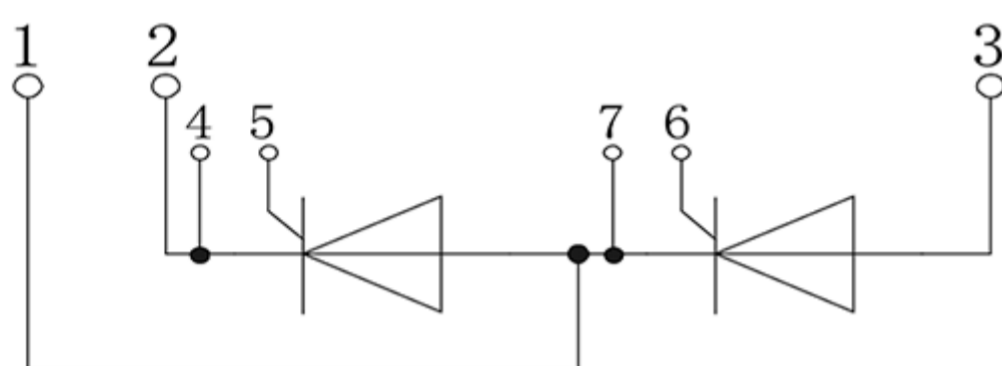
Features / Advantages

- International standard package
- Direct copper bonded Al₂O₃-ceramic with copper base plate
- Planar passivated chip
- Keyed gate/cathode twin pins

Applications

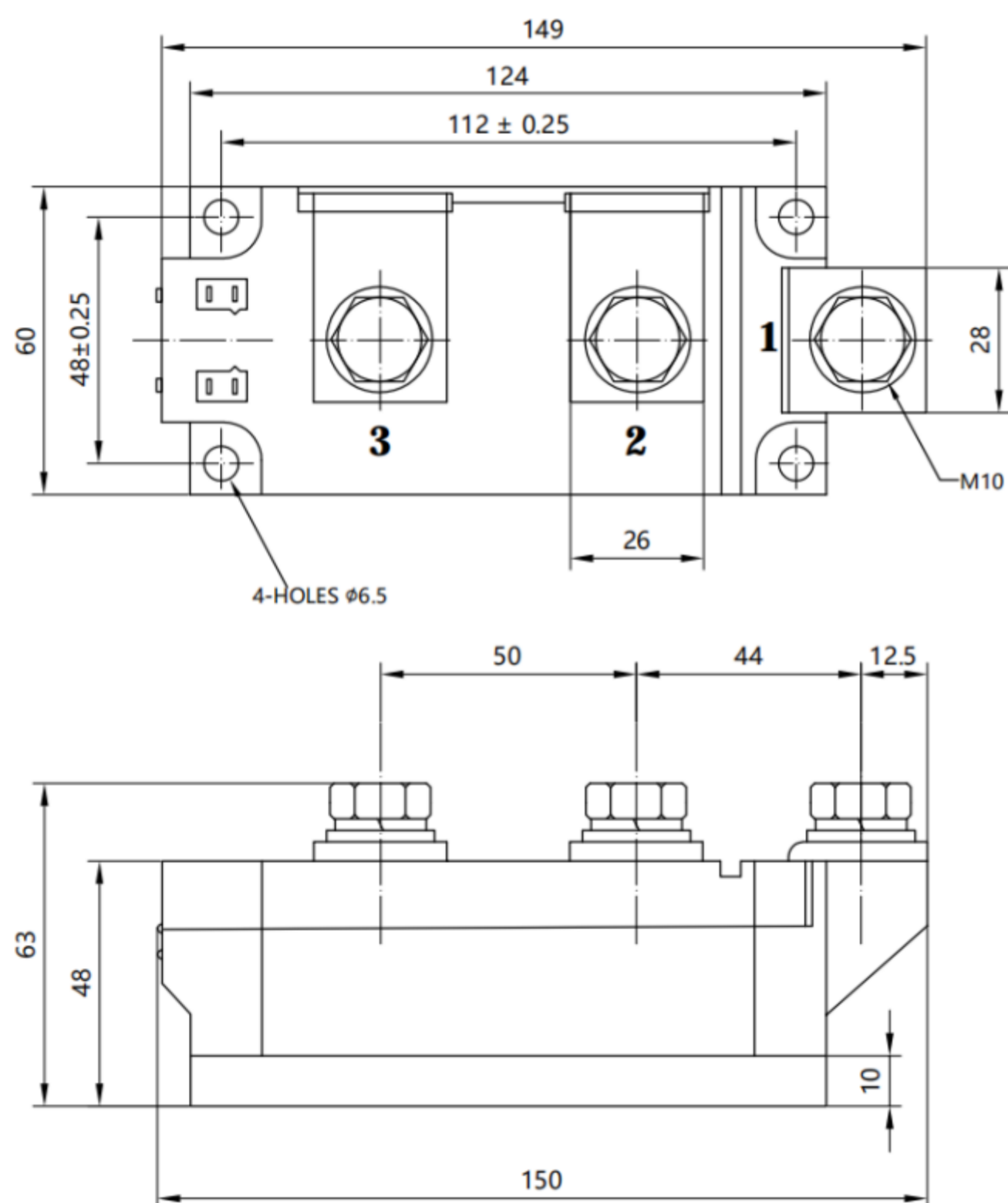
- Motor control, softstarter
- Power converter
- Heat and temperature control for industrial furnaces and chemical processes
- Lighting control
- Solid state switches

Internal Circuit



Package Dimension

Dimensions in Millimeters



Parameters

Parameters	CTT600GK12~22
$V_{DRM} V_{RRM}$	1200~2200V
$I_{TAV} I_{FAV}$ @TC	503A
T_C	85°C
$I_{TSM} I_{FSM}$ @10ms, T_{vj} max	14500A
$V_{(TO)}$ @ T_{vj} max	0.85V
Package style Outline drawings	XTE