

## Model Comparison

Model	VRRM <sub>VDRM</sub> (V)	I <sub>TAV</sub> I <sub>FAV</sub> (A)
CTT430GK12	1200	430
CTT430GK14	1400	430
CTT430GK16	1600	430
CTT430GK18	1800	430
CTT430GK20	2000	430
CTT430GK22	2200	430

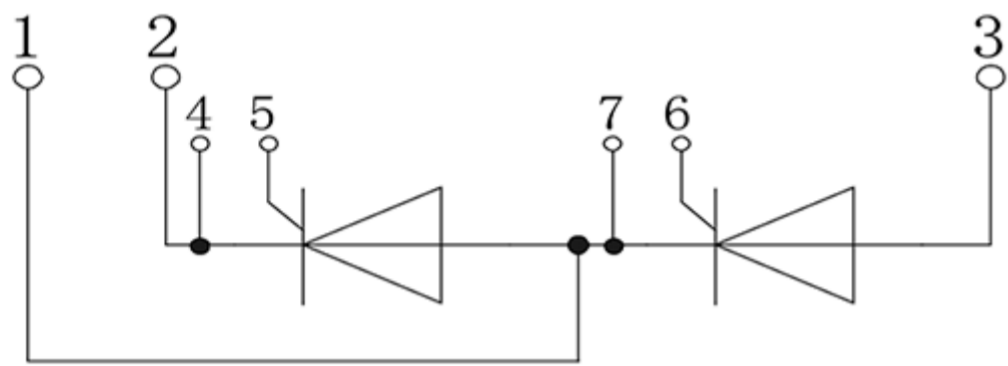
## Summary of Features

- Pressure contact technology for high reliability
- Industrial standard package
- Electrically insulated baseplate
- Short on fail
- Highest robustness

## Benefits

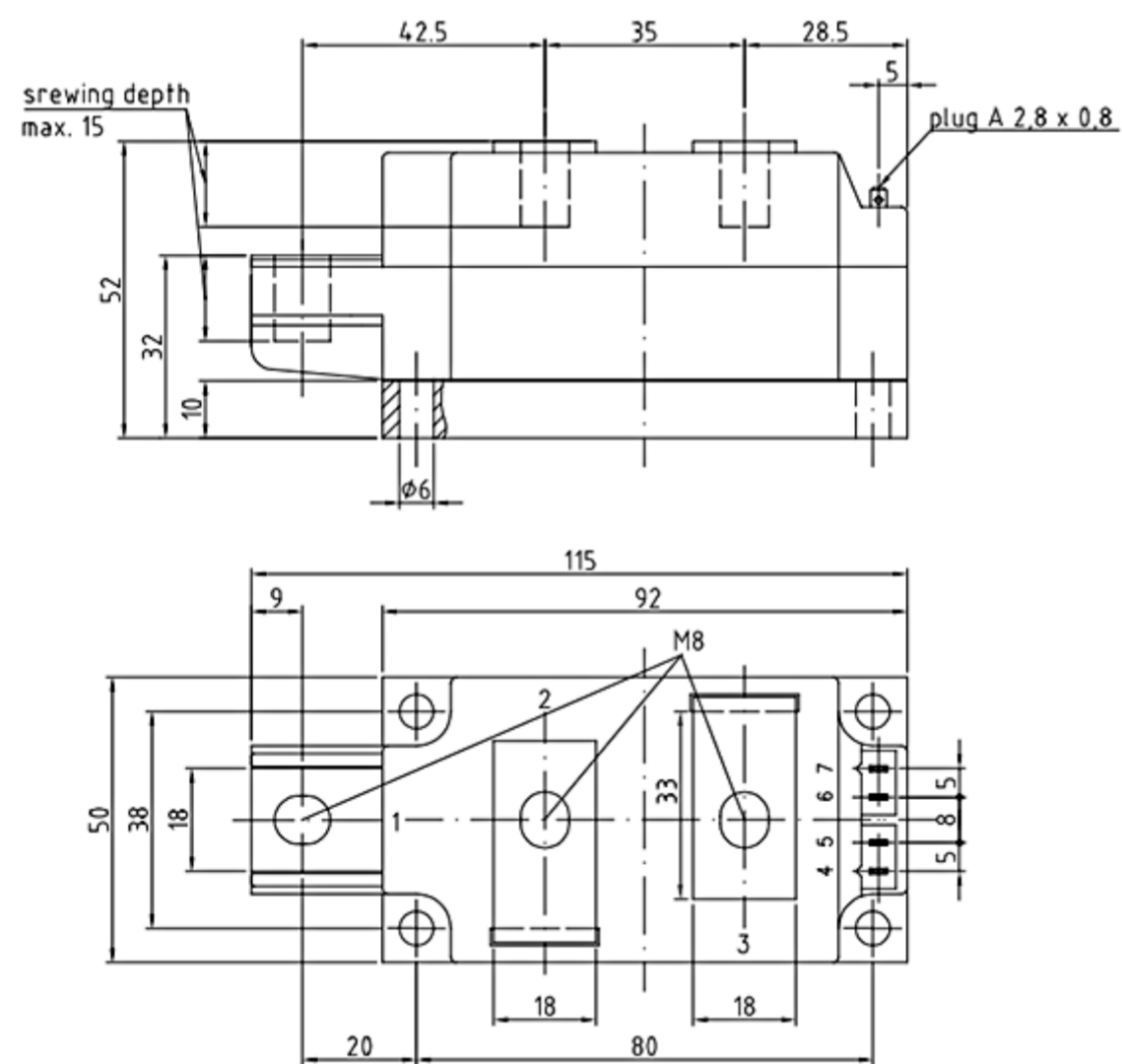
- Designed for high overload and power cycling requirements
- High DC blocking stability over whole lifetime
- High surge current capability especially for short grid spikes
- One supplier for a broad range of Power Block Modules

## Internal Circuit



## Package Dimension

### Dimensions in Millimeters



## Parameters

Parametrics	CTT430GK12~22
$V_{DRM}$ $V_{RRM}$	1200~2200V
$I_{TAV}$ $I_{FAV}$ @TC	430A
$T_C$	95°C
$I_{TSM}$ $I_{FSM}$ @10ms, $T_{vj}$ max	14000A
$V_{(TO)}$ @ $T_{vj}$ max	0.95V
Package style Outline drawings	ITE