

## Model Comparison

Model	VRRM <sub>VDRM</sub> (V)	ITAV <sub>IFAV</sub> (A)
CTT100GK08	800	100
CTT100GK12	1200	100
CTT100GK14	1400	100
CTT100GK16	1600	100
CTT100GK18	1800	100

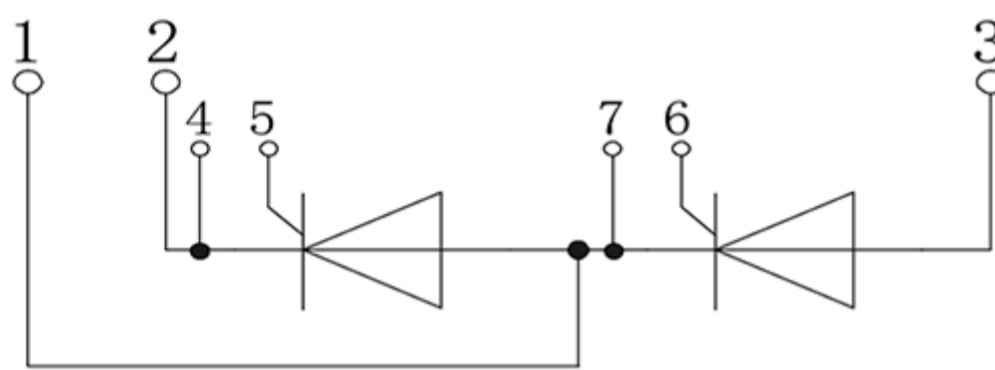
## Features / Advantages

- Thyristor for line frequency
- Planar passivated chip
- Long-term stability
- Direct Copper Bonded Al<sub>2</sub>O<sub>3</sub>-ceramic

## Applications

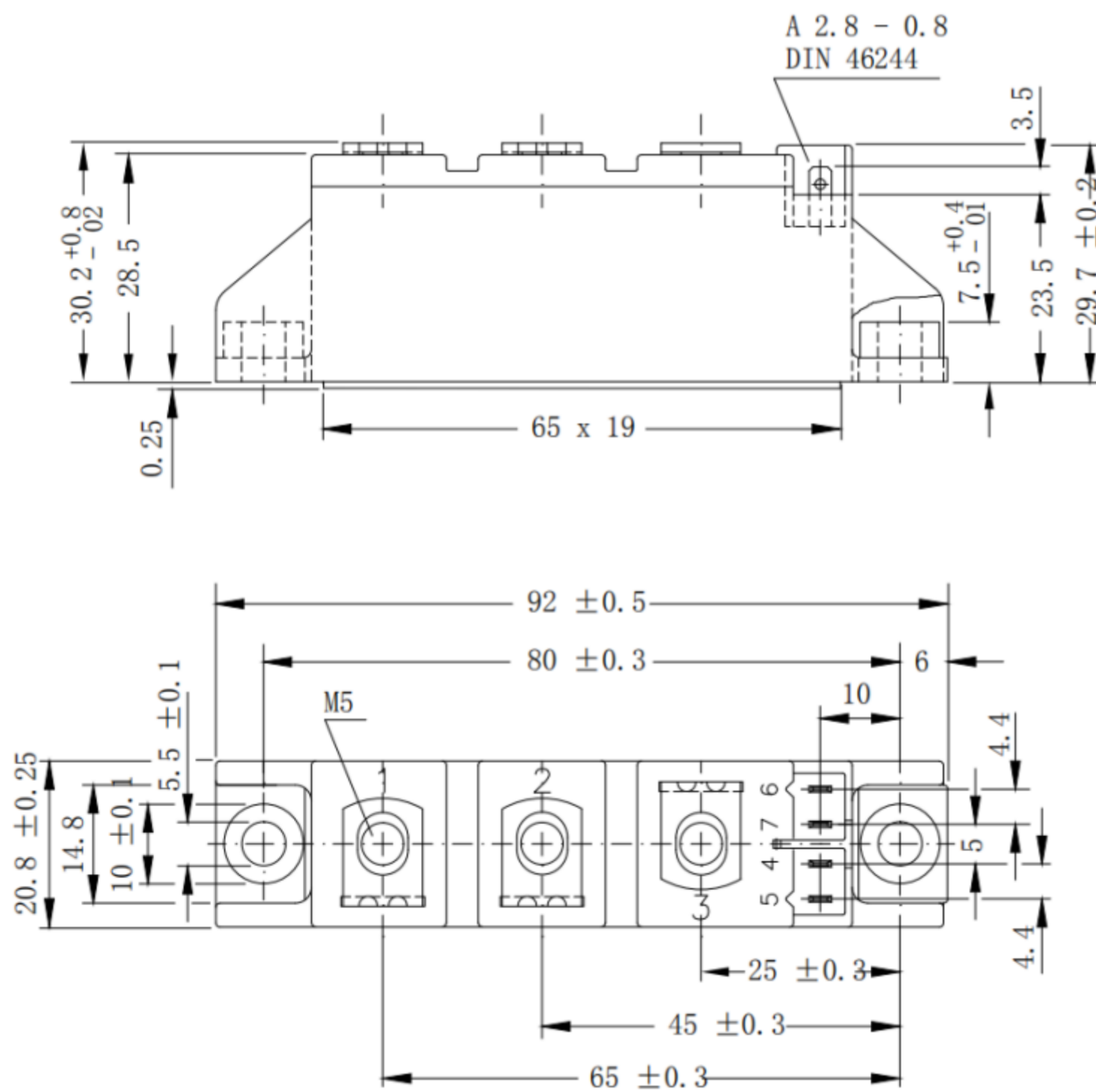
- Line rectifying 50/60 Hz
- Softstart AC motor control
- DC Motor control
- Power converter
- AC power control
- Lighting and temperature control

## Internal Circuit



## Package Dimension

Dimensions in Millimeters



## Parameters

Parameters	CTT100GK08~18
$V_{DRM}$ $V_{RRM}$	800~1800V
$I_{TAV}$ $I_{FAV}$ @TC	100A
$T_C$	85°C
$I_{TSM}$ $I_{FSM}$ @10ms, $T_{vj}$ max	2250A
$V_{(T0)}$ @ $T_{vj}$ max	0.85V
Package style Outline drawings	XTA