

## Model Comparison

| Model     | VRRM <sub>VDRM</sub> (V) | ITAVIFAV(A) |
|-----------|--------------------------|-------------|
| CTD70GK08 | 800                      | 85          |
| CTD70GK12 | 1200                     | 85          |
| CTD70GK14 | 1400                     | 85          |
| CTD70GK16 | 1600                     | 85          |
| CTD70GK18 | 1800                     | 85          |

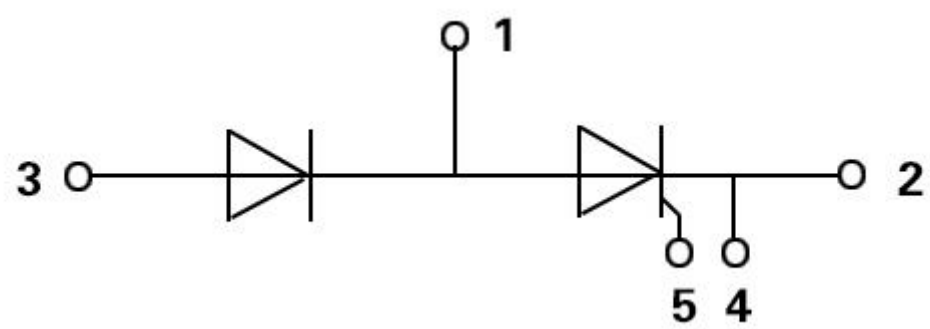
## Features / Advantages

- Thyristor for line frequency
- Planar passivated chip
- Long-term stability
- Direct Copper Bonded Al<sub>2</sub>O<sub>3</sub>-ceramic

## Applications

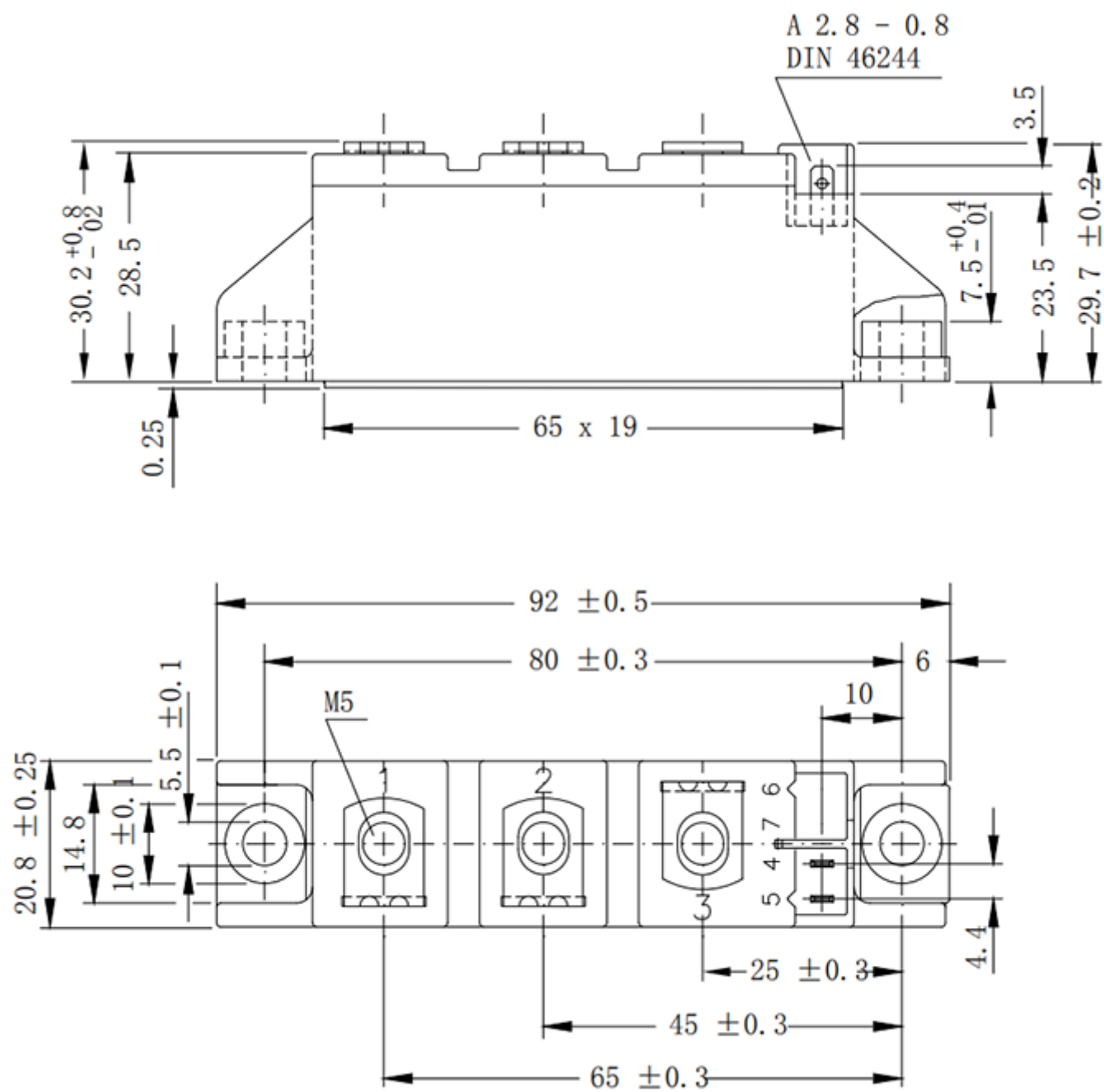
- Line rectifying 50/60 Hz
- Softstart AC motor control
- DC Motor control
- Power converter
- AC power control
- Lighting and temperature control

## Internal Circuit



## Package Dimension

Dimensions in Millimeters



## Parameters

| Parametrics                              | CTD70GK08~18 |
|--|--------------|
| $V_{DRM} V_{RRM}$                        | 800~1800V    |
| $I_{TAV} I_{FAV}$<br>@TC                 | 85A          |
| $T_C$                                    | 85°C         |
| $I_{TSM} I_{FSM}$<br>@10ms, $T_{vj}$ max | 1700A        |
| $V_{(T0)}$<br>@ $T_{vj}$ max             | 0.85V        |
| Package style<br>Outline drawings        | XTA          |