

Model Comparison

Model	VRRM VDRM(V)	ITAVIFAV(A)
CDD600N12	1200	600
CDD600N14	1400	600
CDD600N16	1600	600
CDD600N18	1800	600

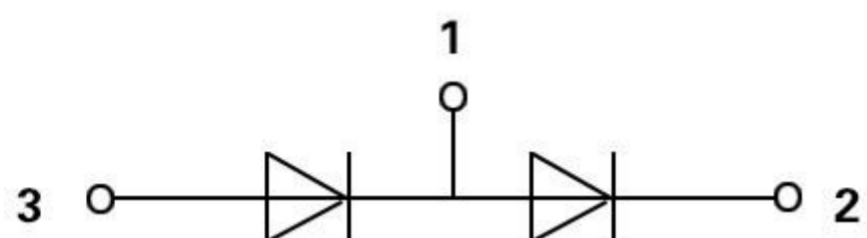
Feature & Advantages

- Pressure contact technology for high reliability
- Industrial standard package
- Electrically insulated baseplate
- Short on fail
- Highest robustness

Applications

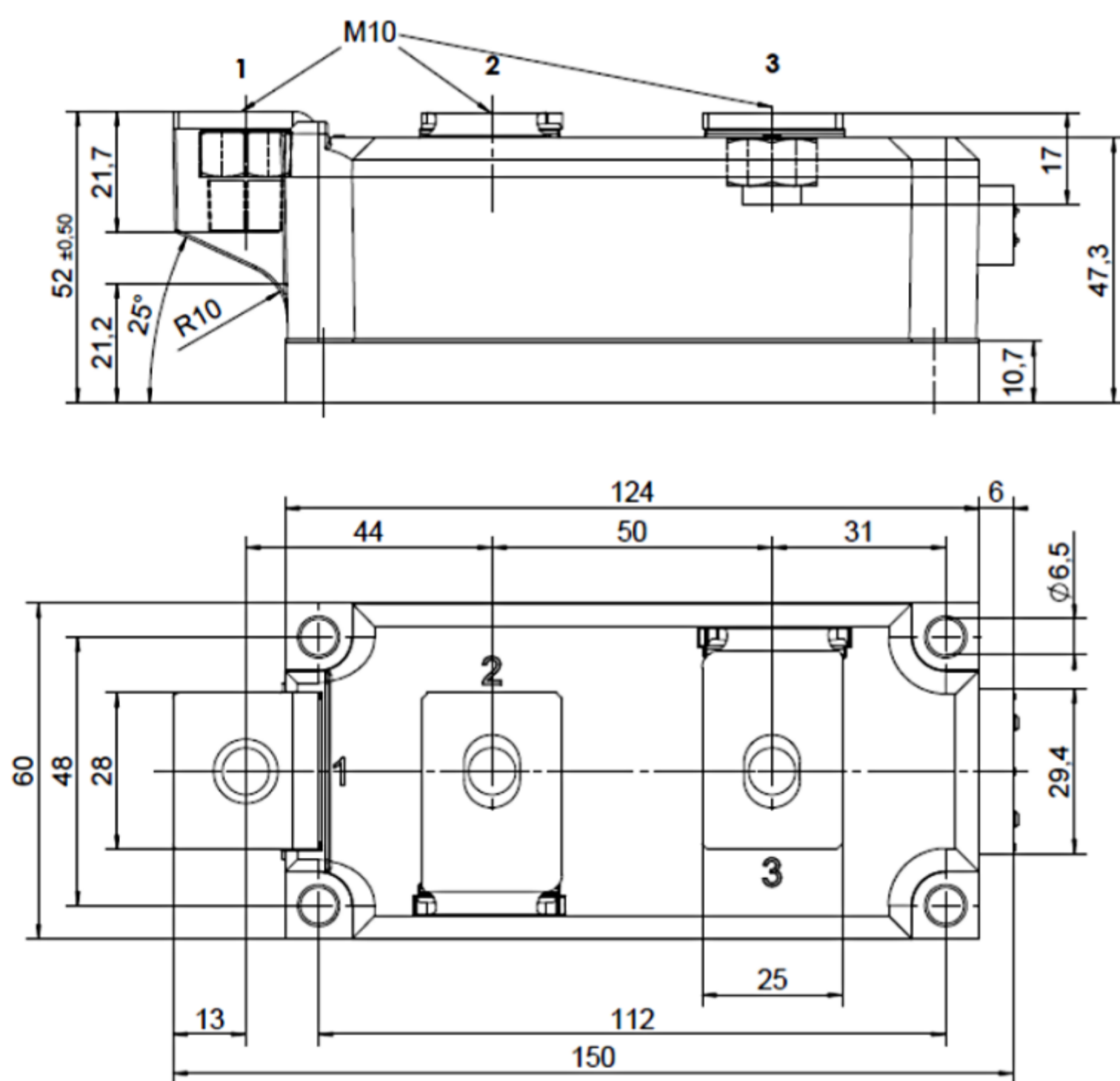
- Designed for high overload and power cycling requirements
- High DC blocking stability over whole lifetime
- High surge current capability especially for short grid spikes
- One supplier for a broad range of Power Block Modules

Internal Circuit



Package Dimension

Dimensions in Millimeters



Parameters

Parameters	CDD600N12~18
$V_{DRM} V_{RRM}$	1200~1800V
$I_{TAV} I_{FAV}$ @TC	600A
T_C	100°C
$I_{TSM} I_{FSM}$ @10ms, T_{vj} max	1900A
$V_{(FM)}$ @ T_{vj} max	0.78V
Package style Outline drawings	ITE