

## Model Comparison

Model	VRRM VDRM(V)	ITAVIFAV(A)
CDD253N08	800	310
CDD253N12	1200	310
CDD253N14	1400	310
CDD253N16	1600	310
CDD253N18	1800	310
CDD253N20	2000	310
CDD253N22	2200	310

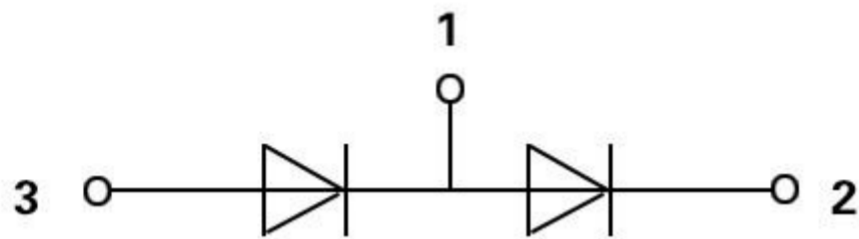
## Features / Advantages

- Package with DCB ceramic
- Improved temperature and power cycling
- Planar passivated chips
- Very low forward voltage drop
- Very low leakage current

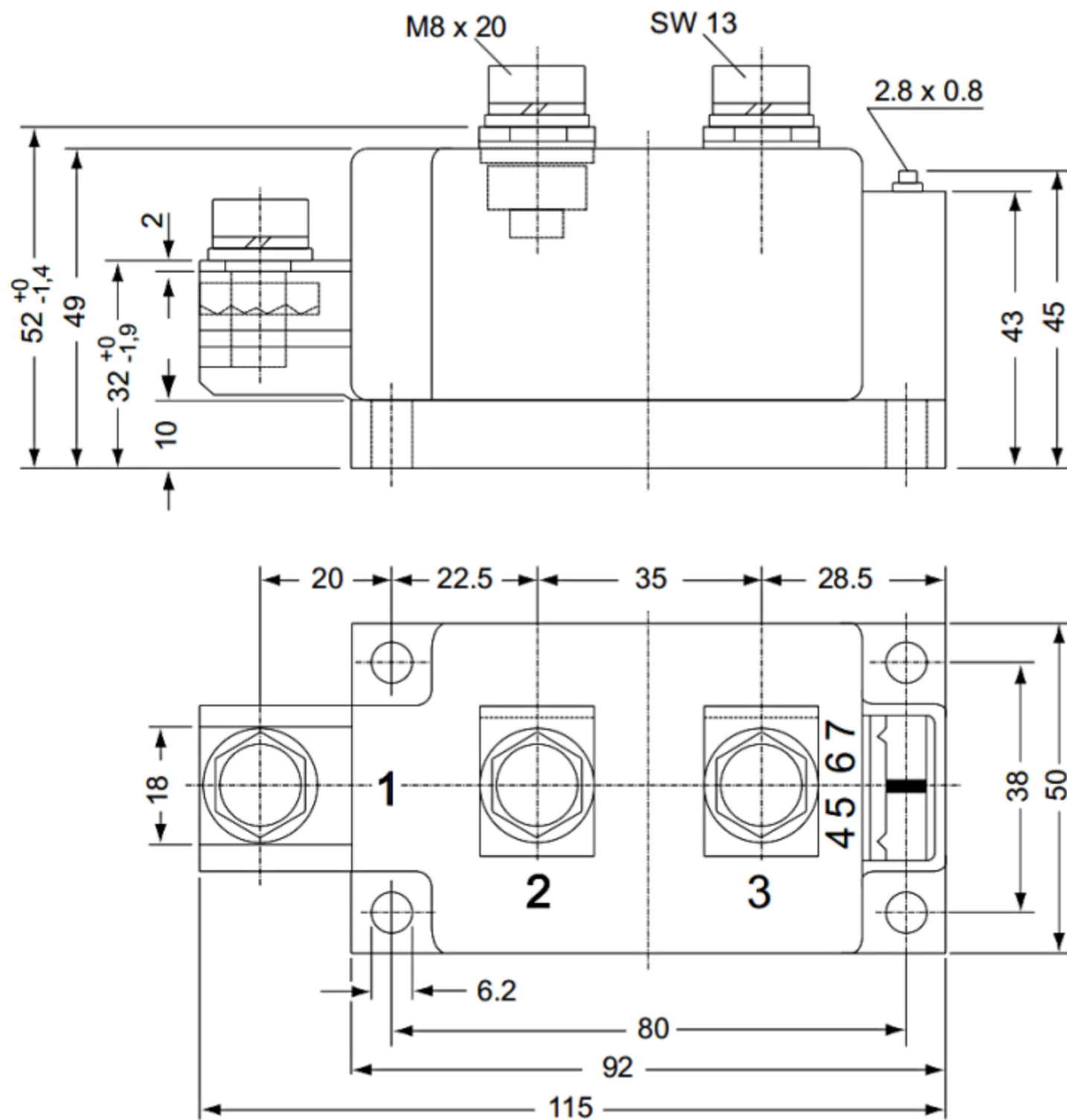
## Applications

- Diode for main rectification
- For single and three phase bridge configurations
- Supplies for DC power equipment
- Input rectifiers for PWM inverter
- Battery DC power supplies
- Field supply for DC motors

## Internal Circuit



## Package Dimension Dimensions in Millimeters



## Parameters

Parametrics	CDD253N08~22
$V_{DRM} V_{RRM}$	800~2200V
$I_{TAV} I_{FAV}$ @TC	310A
$T_C$	100°C
$I_{TSM} I_{FSM}$ @10ms, $T_{vj}$ max	10500A
$V_{(FM)}$ @ $T_{vj}$ max	0.80V
Package style Outline drawings	XTD